

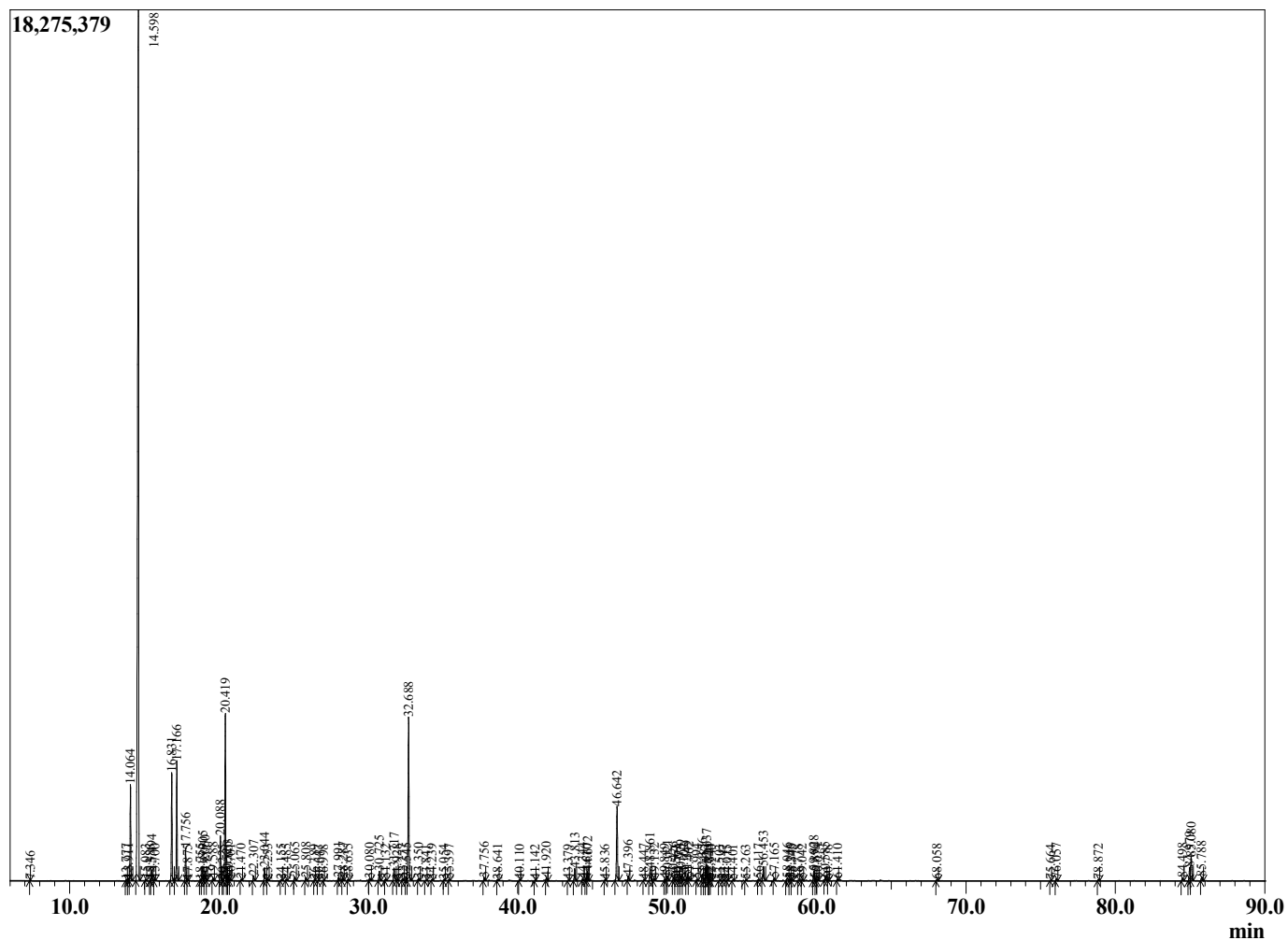
Sample Information

Sample Type : Essential Oil
 Sample Name : Boswellia carterii
 Injection Volume : 0.10

Frankinense Carterii Premium
 Lot# SOX5-XC
 Country: Somalia



Chromatogram Boswellia carterii



R.Time	Name	Area%
7.346	Toluene	0.01
13.777	Hashishene	0.04
13.911	Tricyclene	0.08
14.064	alpha-Thujene	3.68
14.598	alpha-Pinene	48.81
15.083	Thujadiene isomer	0.04
15.386	alpha-Fenchene	0.02
15.494	Camphene	0.38
15.700	Thuja-2,4(10)-diene	0.06
16.831	Sabinene	4.27
17.166	beta-Pinene	4.66
17.756	Myrcene	1.25
17.875	Unidentified	0.02
18.755	Pseudolimonene	0.04
18.905	alpha-Phellandrene	0.60
19.060	delta-3-Carene	0.38
19.177	Hexyl acetate	0.01
19.588	alpha-Terpinene	0.12
20.088	para-Cymene	1.87
20.225	Unidentified	0.02
20.419	Limonene	7.22
20.526	beta-Phellandrene	0.12
20.603	1,8-Cineole	0.23
20.761	cis-beta-Ocimene	0.06
21.470	trans-beta-Ocimene	0.05
22.307	gamma-Teprinene	0.22
23.044	1-Octanol	0.59
23.253	Pinol	0.05
24.155	Terpinolene	0.06
24.485	para-Cymenene	0.04
25.065	Linalool	0.19
25.808	Unidentified	0.14
26.389	beta-Thujone	0.02
26.647	trans-para-Mentha-2,8-dien-1-ol	0.01
26.998	alpha-Campholenal	0.02
27.991	trans-Pinocarveol	0.15
28.287	trans-Verbenol	0.13
28.635	Unidentified	0.06
30.080	alpha-Phellandrene-8-ol	0.12
30.725	Terpinen-4-ol	0.44
31.132	para-Cymen-8-ol	0.07
31.717	alpha-Terpineol	0.68
31.928	Estragole	0.03
32.277	alpha-Phellandrene epoxide	0.08
32.545	Verbenone	0.11
32.688	Octyl acetate	7.90
33.350	trans-Carveol	0.09
33.841	Decyl methyl ether	0.02
34.239	cis-Carveol	0.04
35.054	Carvone	0.03
35.397	Carvotanacetone	0.05
37.756	Bornyl acetate	0.14
38.641	Thymol	0.06
40.110	Unidentified	0.03
41.142	delta-Elementene	0.02
41.920	alpha-Cubebene	0.15

R.Time	Name	Area%
43.379	Cyclosativene	0.03
43.813	alpha-Copaene	0.62
44.344	beta-Bourbonene	0.10
44.610	beta-Cubebene	0.06
44.672	beta-Elemene	0.46
45.836	alpha-Gurjunene	0.04
46.642	beta-Caryophyllene	3.82
47.396	trans-alpha-Bergamotene	0.24
48.447	Cadina-3,5-diene	0.04
48.861	alpha-Humulene	0.64
49.132	Alloaromadendrene	0.10
49.849	trans-Cadina-1(6),4-diene	0.08
50.021	gamma-Murolene	0.27
50.426	Germacrene D	0.15
50.561	trans-beta-Bergamotene	0.03
50.774	delta-Selinene	0.05
50.929	beta-Selinene	0.28
51.102	trans-Muurolo-4(14),5-diene	0.11
51.349	alpha-Selinene	0.23
51.462	alpha-Murolene	0.14
51.994	beta-Bisabolene	0.06
52.356	gamma-Cadinene	0.35
52.481	Cubebol	0.14
52.637	delta-Cadinene	0.82
52.770	cis-Calamenene	0.04
52.844	trans-Calamenene	0.07
52.940	Zonarene	0.05
53.503	trans-Cadina-1,4-diene	0.04
53.747	alpha-Cadinene	0.04
54.015	alpha-Calacorene	0.03
54.401	alpha-Elemol	0.05
55.263	Unidentified	0.04
56.117	Spathulenol	0.07
56.453	Caryophyllene oxide	0.80
57.165	Viridiflorol	0.12
58.046	Humulene epoxide II	0.18
58.246	gamma-Eudesmol	0.09
58.343	1,10-di-epi-Cubenol	0.08
58.778	Junenol	0.02
59.042	Epicubenol	0.07
59.828	epi-alpha-Cadinol	0.50
59.890	epi-alpha-Muurolol	0.09
60.074	Unidentified	0.07
60.585	Cadin-4-en-10-ol + Unidentified	0.16
60.778	Unidentified	0.02
61.410	Unidentified	0.07
68.058	Phellandrene dimer	0.06
75.664	Myrcene Dimer I	0.02
76.057	Neocembrene	0.11
78.872	Elemene Simer	0.06
84.498	Cembrenol	0.15
84.979	Incensole	0.71
85.080	Serratol	1.30
85.788	Incensyl acetate	0.22
		100.00